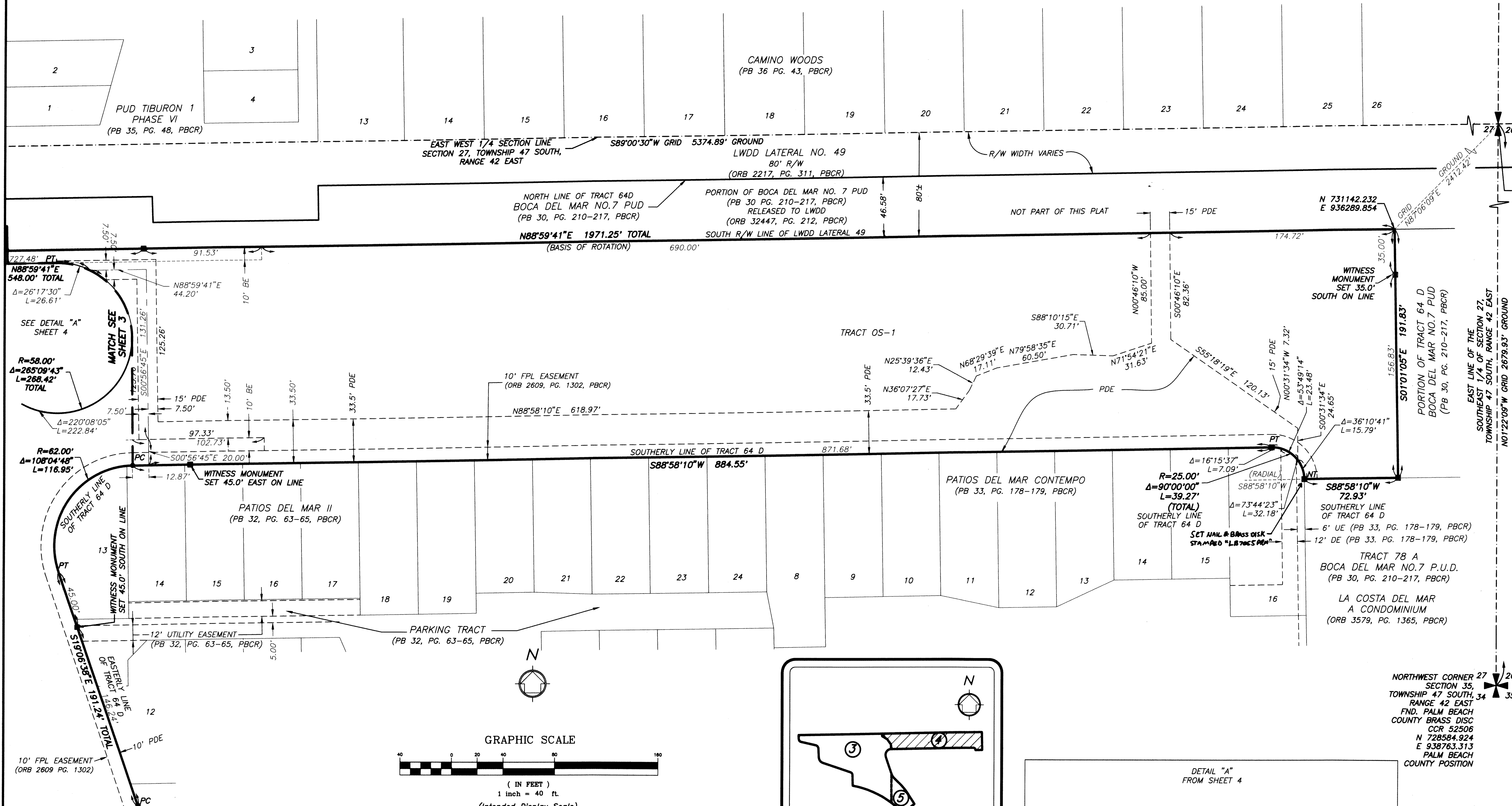


# BOCA DEL MAR PUD-BANYAN COVE AT MIZNER VILLAGE

BEING A REPLAT OF A PORTION OF TRACT 64 D, BOCA DEL MAR NO. 7 PUD, PLAT BOOK 30, PAGES 210 THROUGH 217  
 INCLUSIVE OF THE PUBLIC RECORDS, PALM BEACH COUNTY, FLORIDA. LYING AND SITUATE  
 IN SECTION 27, TOWNSHIP 47 SOUTH, RANGE 42 EAST, PALM BEACH COUNTY, FLORIDA.

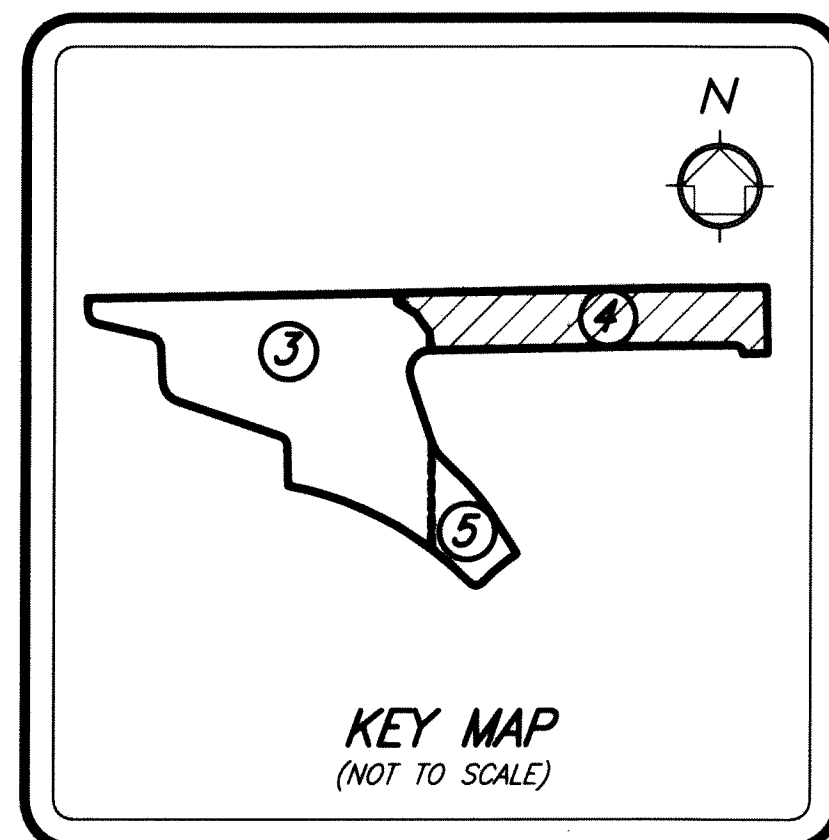
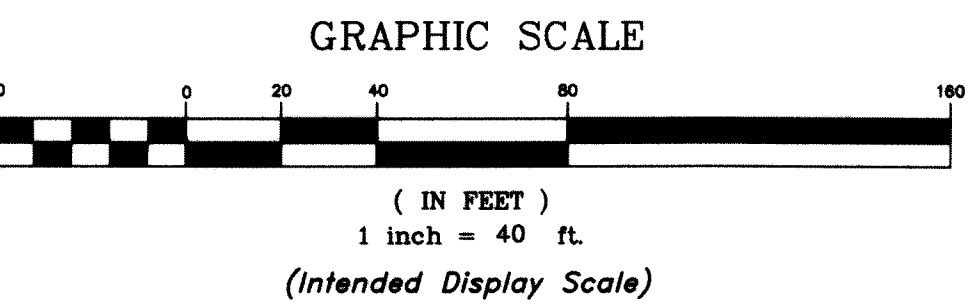
# 74

SHEET 4 OF 5 SHEETS

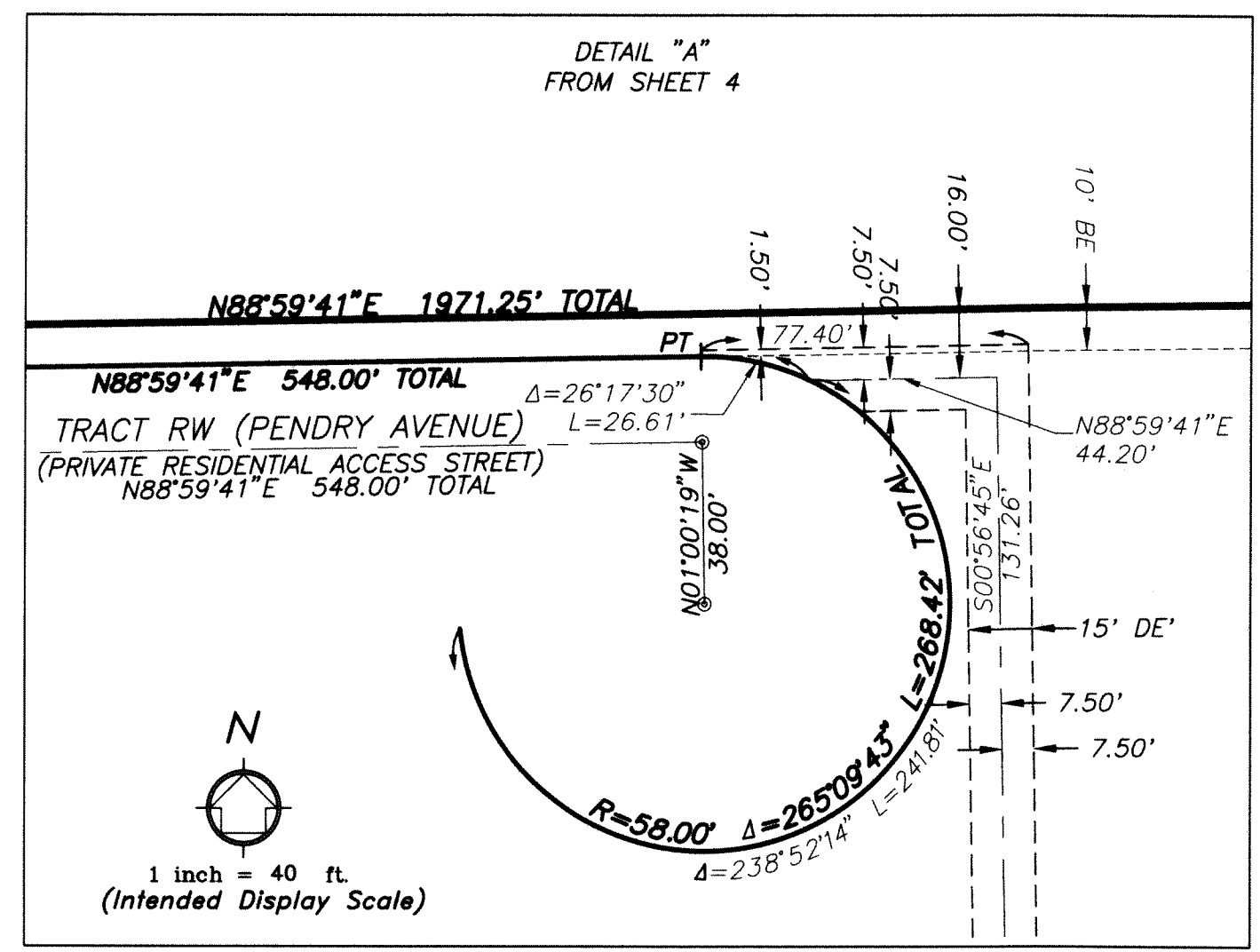


WEST 1/4 CORNER SECTION 26, TOWNSHIP 47 SOUTH, RANGE 42 EAST  
 CCR 52493  
 N 731264.181  
 E 938699.272  
 PALM BEACH COUNTY POSITION (NOT FOUND)

NORTHWEST CORNER 27 SECTION 35, TOWNSHIP 47 SOUTH, RANGE 42 EAST  
 FND. PALM BEACH COUNTY BRASS DISC  
 CCR 52506  
 N 728584.924  
 E 938783.313  
 PALM BEACH COUNTY POSITION



- LEGEND**
- |       |                                    |        |   |
|-------|------------------------------------|--------|---|
| BE    | = Buffer                           | PBCR   | = Palm Beach County Records   |
| C/L   | = Center Line                      | PC     | = Page  |
| CCR   | = Certified Corner Record          | PB     | = Plat Book   |
| CONC. | = Concrete                         | PLS    | = Professional Land Surveyor  |
| CB    | = Cord Bearing                     | PRM    | = Permanent Reference Monument  |
| CD    | = Cord Distance                    | PUD    | = Planned Unit Development  |
| Δ     | = Delta (Central Angle)            | PT     | = Point of Tangency   |
| DE    | = Drainage Easement                | PC     | = Point of Curvature  |
| FPL   | = Florida Power & Light            | PRC    | = Point of Reverse Curvature  |
| FND.  | = Found                            | R      | = Radius  |
| LME   | = Lake Maintenance Easement        | RLS    | = Registered Land Surveyor  |
| LMAE  | = Lake Maintenance Access Easement | OHE    | = Maintenance and Roof Overhang Easement  |
| LWDD  | = Lake Worth Drainage District     | R/W    | = Right-of-Way  |
| L     | = Length of Arc                    | RPB    | = Road Plat Book  |
| LB    | = Licensed Business                | (TYP.) | = Typical   |
| NAD   | = North American Datum             | UE     | = Utility Easement  |
| NO.   | = Number                           | ■      | = Set 4"x4" Concrete (PRM) W/Aluminum Disc Stamped "LB 7055 PRM" Unless Otherwise Noted or Witness Monument |
| NT    | = Non Tangent                      | ●      | = Set Nail & Brass Disc Stamped "LB 7055 PRM" Unless Otherwise Noted  |
| (NR)  | = Non Radial                       |        |   |
| ORB   | = Official Records Book            |        |   |
| ⊙     | = Permanent Control Point (PCP)    |        |   |
| PDE   | = Public Drainage Easement         |        |   |



**NOTE:**  
 COORDINATES SHOWN ARE GRID COORDINATES  
 DATUM - NAD 83 (1990 ADJUSTMENT)  
 STATE PLANE FLORIDA EAST ZONE  
 TRANSVERSE MERCATOR PROJECTION  
 LINEAR UNIT = U.S. SURVEY FEET  
 ALL DISTANCES ARE GROUND  
 SCALE FACTOR = 1.000032176  
 PLAT BEARING = GRID BEARING  
 GROUND DISTANCE X SCALE FACTOR = GRID DISTANCE



2035 Vista Parkway, West Palm Beach, FL 33411  
 Phone No. 866.909.2220 www.wginc.com  
 Cert No. 6091 - LB No. 7055

THIS INSTRUMENT WAS PREPARED BY KELSEY M. SMITH, P.S.M., PROFESSIONAL SURVEYOR AND MAPPER, LICENSE NO. 7096 FOR THE FIRM: WGI, INC.